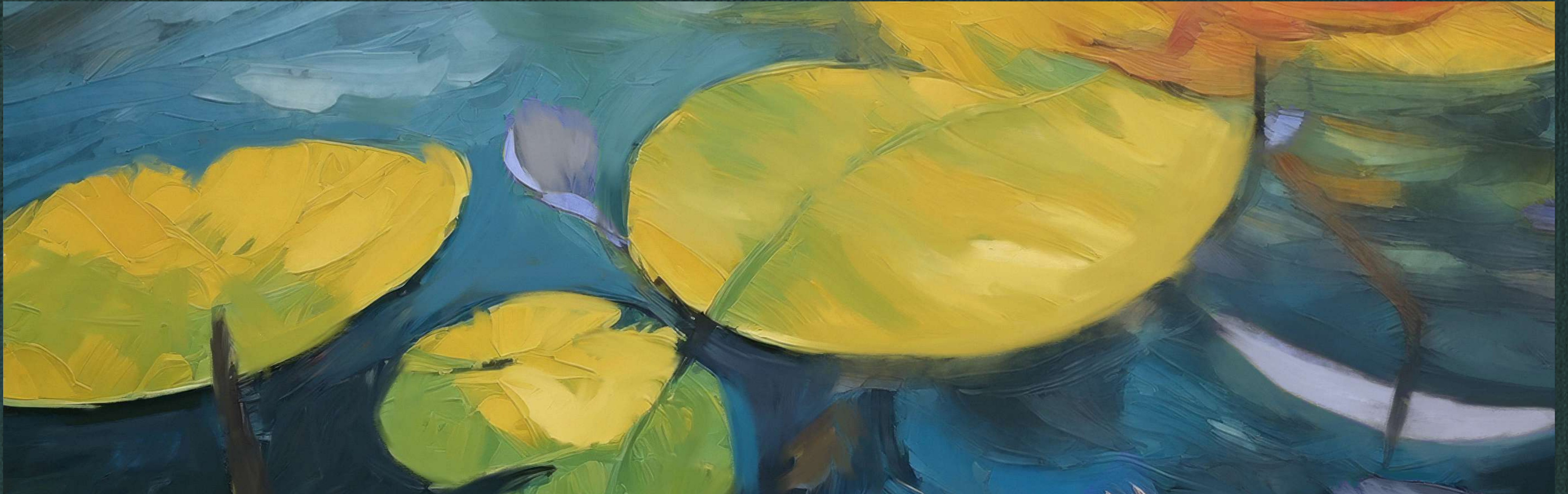


# IVY



## PARKFIVE



دييار  
DEYAAR

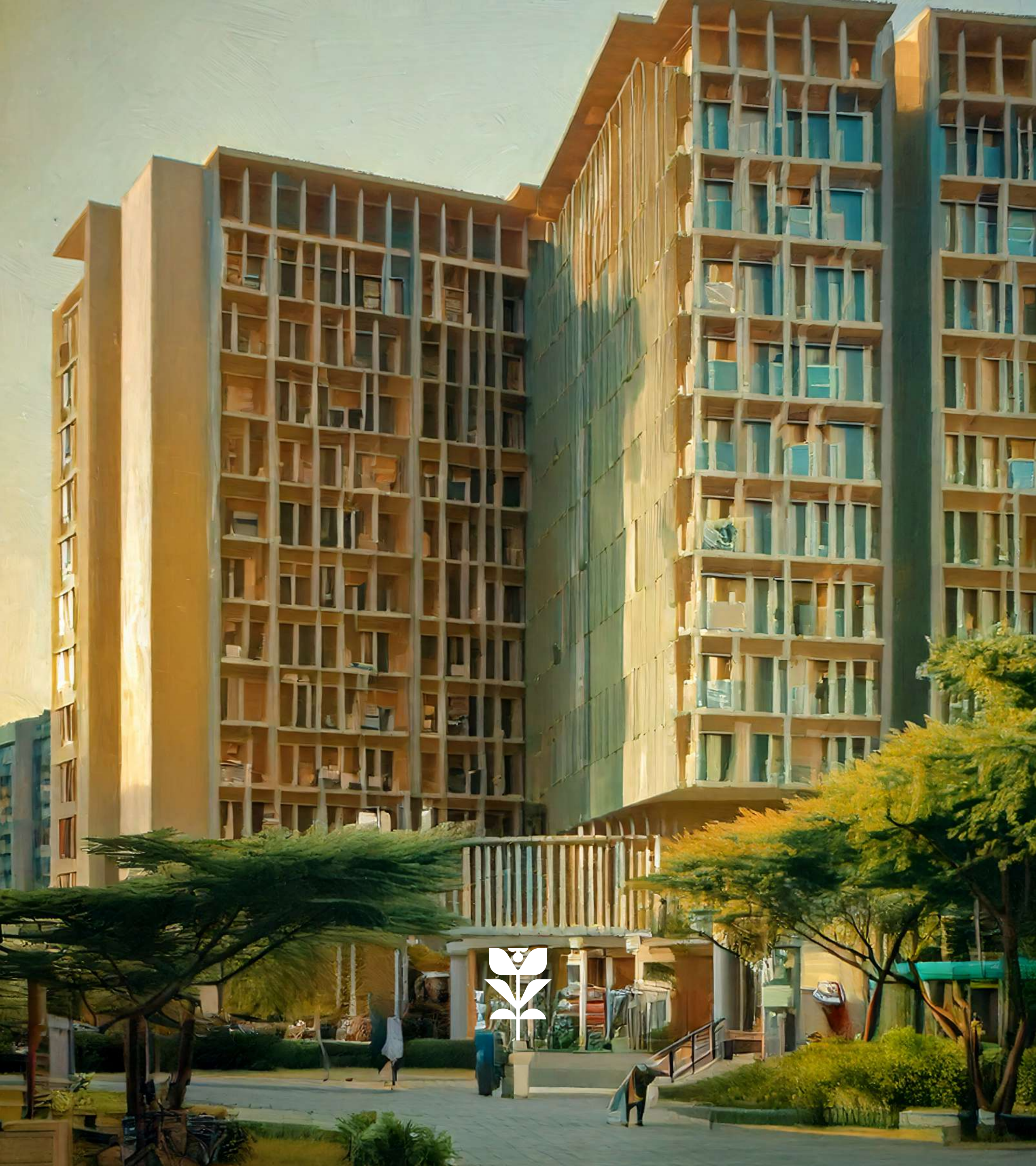




Live  
plenty







## AROUND YOU

WELCOME TO IVY AT PARKFIVE  
DUBAI PRODUCTION CITY

## INDEX



## GETTING AROUND

LIFESTYLE  
COMMUNITY RETAIL & SIKKAS  
IVY AMENITIES



## YOUR NEW HOME

INTERIORS  
RESIDENCES



## THE MINDS BEHIND PARKFIVE

DEVELOPER





WELCOME TO PARKFIVE



IVY





EMBRACE  
A LIFE  
OF PLENTY.



Ivy embraces biophilic design principles, thoughtfully positioned to capture sweeping views of the park and lake, offering a serene connection to nature. The layout of the community revolves around meandering sikkas—pedestrian corridors that facilitate resident interaction and community cohesion while promoting lifestyle enhancement and wellness outcomes.



WHERE PEACEFUL PARKS  
MEET WATERSIDE TRANQUILITY.

As its name suggests, Parkfive presents five distinctive residential towers by Deyaar Development in Dubai Production City, seamlessly integrated within expansive green landscapes.









IVY AT PARKFIVE

# ARCHITECTURAL ARTISTRY.



FACADES THAT  
ELEVATE THE  
ORDINARY.

Ivy at Parkfive harmonizes peaceful natural settings with striking modern architecture.

The structured facade showcases crisp geometric forms and generous outdoor spaces that seamlessly connect interior and exterior environments. This architectural approach weaves heritage elements with contemporary innovation, creating a timeless dialogue between eras.



# WHERE SOPHISTICATION CALLS HOME.



## IVY REDEFINES MODERN LIVING.

Ivy stands as an iconic residential centerpiece within the distinguished Parkfive community.

Offering thoughtfully designed studios, 1 & 2 beds + 2 bed duplexes the tower presents a tri-level amenity experience spanning the podium, 8th floor and spectacular rooftop.









# PERFECTLY POSITIONED.

## WHERE CITY ENERGY MEETS REFINED LIVING.

Dubai Production City becomes your backdrop for sophisticated living at Ivy at Parkfive.

Essential amenities—from retail and restaurants to recreational facilities, educational institutions, and healthcare—are all moments away. This unique setting blends metropolitan energy with peaceful retreat, creating limitless possibilities for personal development and community engagement.

### COMMERCIAL

- 01. Dubai Media City
- 02. Dubai Knowledge Park
- 03. Business Bay
- 04. DIFC
- 05. Dubai Design District
- 06. Dubai Healthcare City

### LEISURE

- 07. Dubai Marina Mall
- 08. Jumeirah Golf Estates
- 09. Mall of the Emirates
- 10. Dubai Butterfly Garden
- 11. Dubai Miracle Garden
- 12. Trump International Golf Course
- 13. Dubai Autodrome
- 14. Global Village
- 15. IMG Worlds of Adventure
- 16. Kite Beach
- 17. Jumeirah Beach
- 18. The Green Planet
- 19. Dubai Mall
- 20. Ras Al Khor Wildlife Sanctuary

### PARKS

- 21. Al Barsha Park
- 22. Safa Park
- 23. Zabeel Park

### HOSPITALITY

- 24. FIVE Palm Jumeirah Hotel
- 25. Novotel Dubai Al Barsha
- 26. Courtyard by Marriott Dubai
- 27. Address Montgomerie
- 28. JW Marriott Marquis Hotel

### HEALTHCARE

- 29. Emirates Hospital Day Surgery
- 30. Right Health Medical Centre
- 31. Saudi German Hospital
- 32. Mediclinic Meaisem
- 33. NMC Royal Hospital





# EFFORTLESS CONNECTIONS.

CONNECTED TO EVERYTHING THAT MATTERS.



Located near Sheikh Mohammed bin Zayed Road and Al Khail Road, Ivy at Parkfive provides easy access to Dubai’s key destinations. City Centre Me’aisem is minutes away, while Dubai Exhibition Centre and Expo City are within 15 minutes. Dubai International Airport is just 25 minutes away, making the city’s essentials part of your lifestyle.

**SHOPPING**

- 1. City Centre Me’aisem
- 2. Centro Al-Andalus
- 3. Circle Mall
- 4. The Town Center
- 5. The Springs Souk

**MOSQUES**

- 6. DPC Mosque
- 7. Yousuf Mohammad Mosque
- 8. City Centre Me’aisem Mosque

**SPORT**

- 9. Dubai International Cricket Stadium
- 10. Jumeirah Golf Estates Golf & Country Club
- 11. Top Padel - City Centre Me’aisem
- 12. IMPZ Pond Running Track

**HOSPITALS**

- 13. Mediclinic Me’aisem
- 14. Saudi German Clinic, Sports City
- 15. Aster Clinic, Sports City
- 16. Aster Clinic, JVC

**GROCERIES**

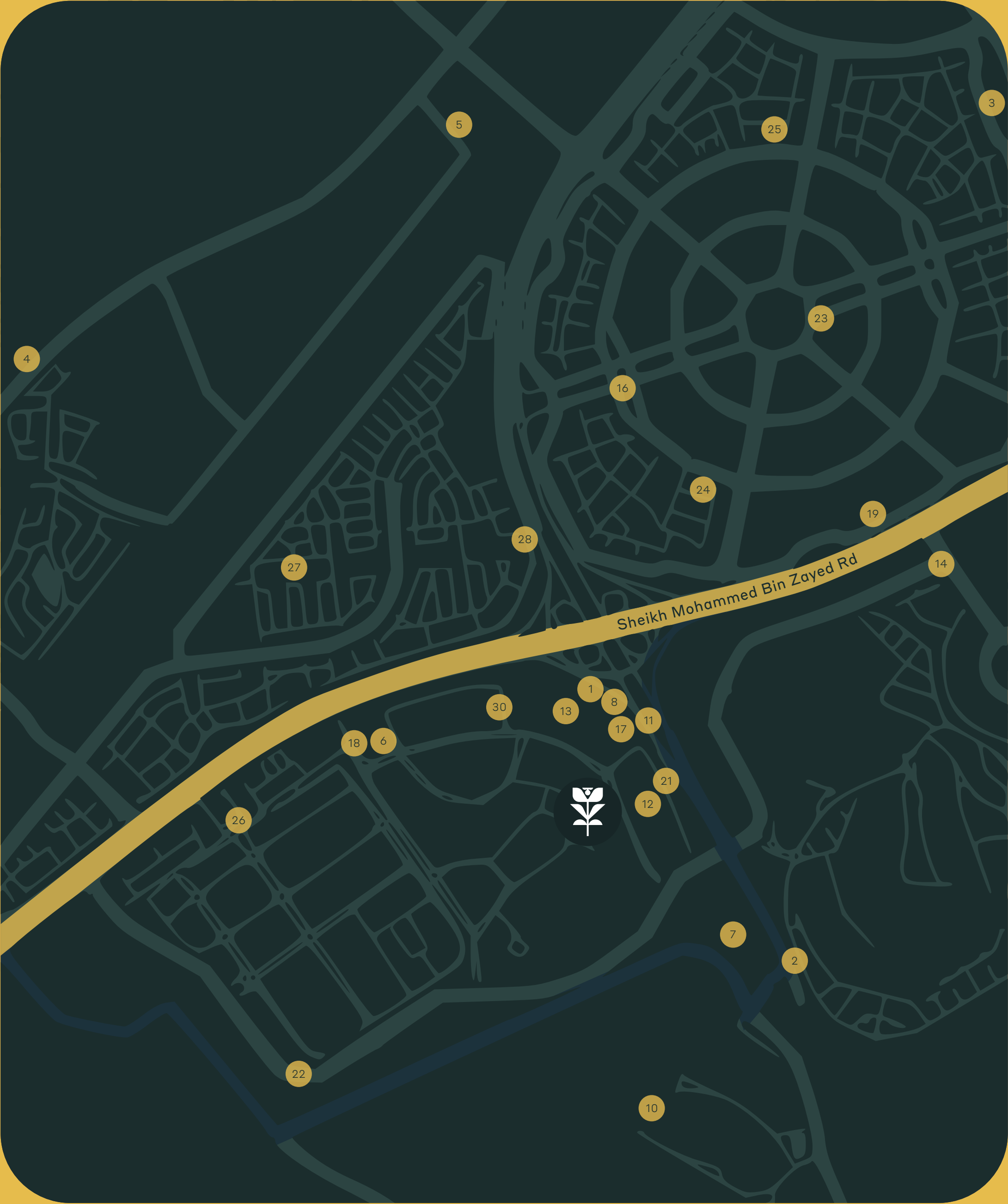
- 17. Carrefour Hypermarket
- 18. Mango Hypermarket
- 19. Al Maya Supermarket, JVC
- 20. Al Maya Supermarket, Sports City
- 21. New W Mart Supermarket
- 22. Carrefour Midtown

**PARKS**

- 23. Circle Community Park
- 24. Halfa Park - JVC
- 25. Roolh Park - JVC

**SCHOOLS**

- 26. Roots Montessori Nursery IMPZ
- 27. Arcadia British School
- 28. Sunmarke School
- 29. Victory Heights Primary School
- 30. Kids Kingdom Daycare







LIFESTYLE AMENITIES





# 75+ AMENITIES & RETAIL.

REDEFINING  
ROOFTOP REVELRY  
AND PODIUM  
PERFECTION.



Parkfive’s ground level offers vibrant community space.

Ivy features amenities across its podium, 8th floor and rooftop with breathtaking views. Shaded areas and indoor-outdoor transitions create sanctuaries for connection and solitude.

# CRAFTED FOR LIVING.

WHERE NATURE AND  
SOPHISTICATION  
CONVERGE.

Welcome to a life tailored by  
master artisans and adorned by  
nature’s grand design.



Ivy at Parkfive champions the harmony of nature, wellness, and sustainable design. At the community’s foundation are ‘Sikkas’—authentic Arabian walkways that curve through expansive green zones and communal spaces. These organic pathways, complemented by rich vegetation, foster a dynamic community where artistic expression and human connection take root.









COMMUNITY RETAIL & SIKKAS





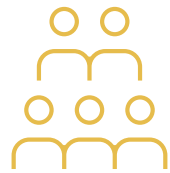
PARKFIVE'S SIKKAS



TIMELESS SIKKAS, THREADS OF COMMUNITY. **WEAVING MOMENTS INTO MEMORIES.**

At Parkfive's heart, sikkas whisper tales of connection as timeless pathways etched into the landscape. These arteries of community pulse with shared experiences, where neighbors become friends and stories intertwine, nurturing vibrant, inclusive growth.

PARKFIVE'S FRIDAY MARKETS



WHERE COMMUNITY AND COMMERCE **DANCE.**

Friday markets and kiosks breathe life into the air, transforming everyday errands into voyages of discovery at these regular gatherings.

PARKFIVE'S CONVENIENCE RETAIL



URBAN CONVENIENCE. **ELEVATING** THE EVERYDAY.

Find life's essentials steps from your door. Thoughtfully integrated shops and services ensure your needs are met with ease and style.





PARKFIVE'S FOOD MARKET HALL



EPICUREAN ODYSSEY:  
**A WORLD OF FLAVORS AT  
YOUR DOORSTEP.**

Embark on a culinary journey through vibrant eateries and gourmet shops, from farm-fresh produce to artisanal delights.

PARKFIVE'S CONTEMPORARY ARABIAN ART



TIMELESS TALES IN MODERN  
STROKES: **WHERE HERITAGE  
MEETS INNOVATION.**

Murals and sculptures are silent storytellers bridging past and future. Immerse yourself in striking artworks that blend cultural heritage with modern expression.

PARKFIVE'S SHADED SPACES



WHISPERS OF **NATURE**  
IN THE URBAN SYMPHONY.

Discover pockets of tranquility where dappled sunlight plays through leaves, creating retreats for peaceful reflection or friendly conversation.

PARKFIVE'S INSIDE OUT SPACES



SEAMLESS HORIZONS:  
**WHERE INTERIOR LUXURY  
MEETS OUTDOOR FREEDOM.**

Blur the lines between indoors and out in areas that capture the best of both worlds, adapting to your lifestyle whatever the occasion.

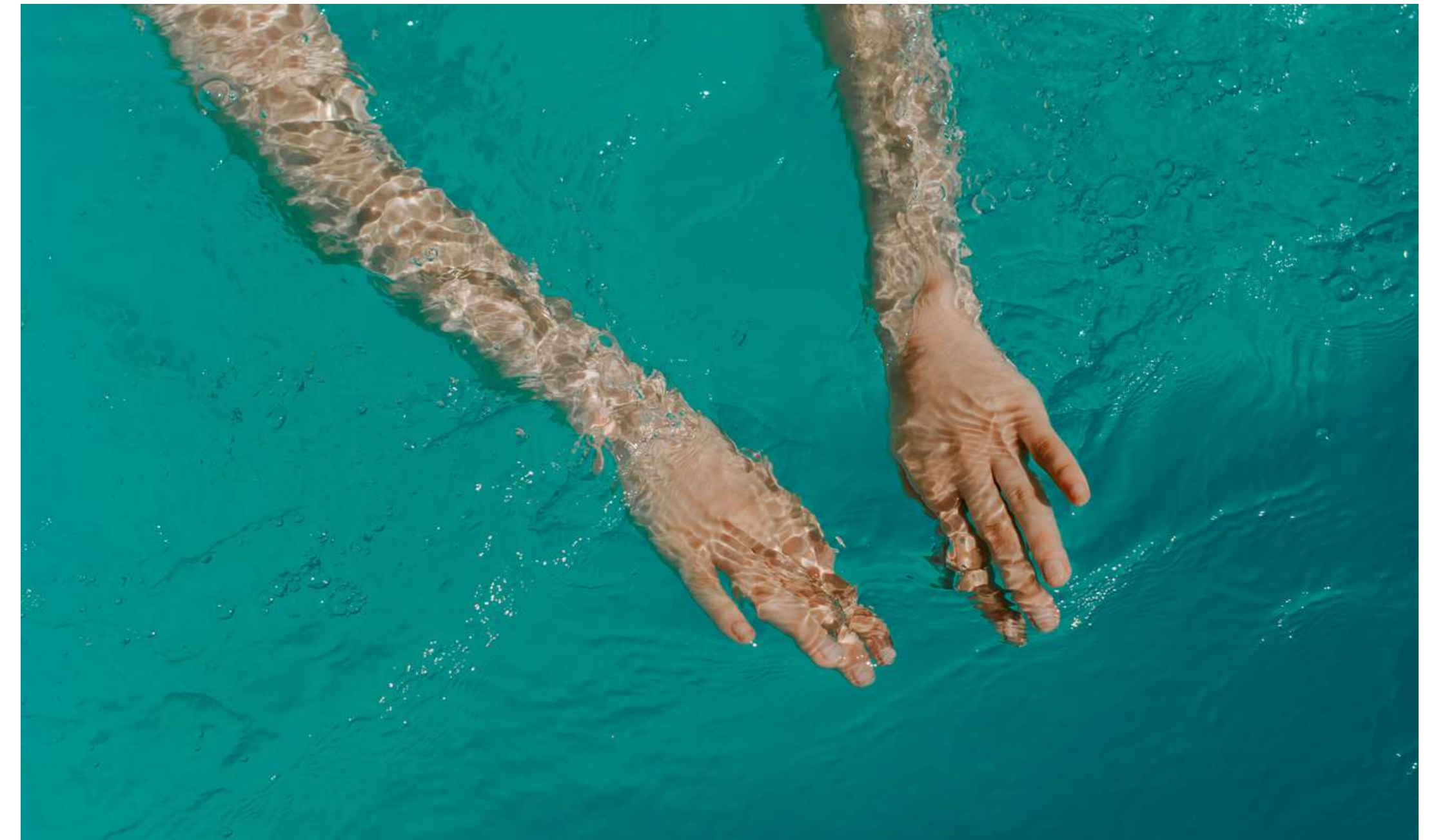






AMENITIES AT THE IVY TOWER

# WHERE LUXURY LIFESTYLE SOARS.



## AN ADULT OASIS.

Ivy Tower features amenities across three levels - the podium, 8th floor and rooftop. Each level offers unique spaces from social gathering areas to wellness zones, creating a complete lifestyle destination.





GYM + CHANGING ROOMS



WHERE WELLNESS  
**TRANSCENDS** BOUNDARIES.

Ivy's podium features a cutting-edge gym that blends indoor fitness with outdoor tranquility.









OUTDOOR PODIUM AMENITIES

KIDS POOL



WHERE SPLASHES  
OF **JOY ECHO** ACROSS  
GENERATIONS.

The kids’ pool seamlessly merges with the family swimming area, creating a harmonious waterscape where little ones splash in safe shallows while adults unwind nearby.

ADULT POOL



WHERE SKY AND  
WATER EMBRACE IN  
**INFINITE HARMONY.**

Crystalline waters merges with the horizon, surrounded by tranquil trees and elegant bamboo decking with plush lounges.

COWORKING SPACE



WHERE INSPIRATION  
**FLOWS IN THE OPEN AIR.**

Carefully designed outdoor workstations surrounded by gentle breezes. Residents experience enhanced productivity in this unique blend of professional space and natural ambience.

COMMUNITY LAWN



WHERE NATURE AND  
COMMUNITY DANCE IN  
**SYMPHONY.**

Pristine landscaping surrounds the development. Lush green spaces and modern amenities complement dynamic pathways, embodying the fusion of cultural heritage and contemporary living.









OUTDOOR PODIUM AMENITIES

KIDS PLAY AREA



WHERE CHILDHOOD  
ADVENTURES **COME ALIVE.**

The little ones will explore in this expansive playground designed for creative play with engaging equipment and comfortable parent seating.



BBQ HAVEN



WHERE FLAVORS  
**SIZZLE** UNDER OPEN SKIES.

Sleek grills and comfortable seating invite residents to craft culinary masterpieces under the stars, creating cherished memories.







8<sup>TH</sup> FLOOR AMENITIES

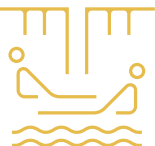
SWIMMING POOL



WHERE SERENITY MEETS **THE SKYLINE.**

Retreat to private pools that merge tranquility with breathtaking views. Find your private oasis, perfect for peaceful relaxation.

POOL DECK



WHERE CONVERSATIONS FLOW WITH **PANORAMIC VIEWS.**

Thoughtfully arranged lounges and intimate seating nooks at elevation. Curated furniture creates perfect spots for socializing with stunning vistas.

OUTDOOR LOUNGE AREA



WHERE MOMENTS **UNWIND IN STYLE.**

Designed as a serene extension of home, the lounge area invites you to pause, relax, and connect.

ROOFTOP AMENITIES

KIDS PLAY AREA



WHERE CHILDHOOD ADVENTURES **COME ALIVE.**

The little ones will explore in this expansive sandy playground designed for creative play with engaging equipment and comfortable parent seating.

GARDEN SEATING AREA



WHERE NATURE SETS THE SCENE **FOR CONNECTION.**

Here, mornings begin with fresh air, afternoons welcome unhurried conversations, and evenings find their calm under open skies.

GREEN WALKWAYS



WHERE GREENERY **EMBRACES CITY LIFE.**

The linear park weaves greenery through the urban landscape, blending nature and modern living with indigenous plants.

JOGGING TRACK



WHERE EVERY STEP **EMBRACES WELLNESS.**

Whether for a morning run or an evening walk, it's a dedicated path to fitness, focus, and rejuvenation.







# THOUGHTFULLY CURATED INTERIORS.

CRAFTED FOR  
QUINTESSENTIAL LIVING.



The light-filled interiors feature high-end finishes and premium appointments, creating chic living spaces for discerning residents. These modern interiors harmonize with the striking architecture and vibrant neighborhood, where design and nature dance in perfect harmony.





# ELEVATING CITY LIVING TO NEW HEIGHTS.



## LIVING ROOM

The living room features the highest specification design with a color scheme reflecting timeless contemporary energy from the precinct's vibrant atmosphere and natural surroundings.



WHERE EXCEPTIONAL DESIGN  
FRAMES STUNNING VISTAS.

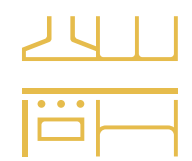
Ivy at Parkfive residences testify to contemporary elegance and masterful craftsmanship.

These thoughtfully designed homes blend biophilic elements with eclectic aesthetics, embodying a quintessential lifestyle that marries elegant charm with modern sophistication.

The studios, 1 & 2 beds + 2 bed duplexes cater to families. These living spaces feature breathtaking views - expansive windows frame spectacular park and lagoon vistas, creating an intimate connection with nature.







## KITCHEN

Sleek, contemporary, and expansive kitchens showcase exquisite craftsmanship and premium materials. Every detail exudes quality, and the surfaces are meticulously finished.



## BATHROOMS

Minimalist bathrooms with modern vanity and aesthetics, high-end fixtures, and elegant finishes create a sanctuary of relaxation and rejuvenation.





## BEDROOMS

Tranquil bedrooms offer a perfect retreat with their refined design and soothing ambience. Thoughtful layouts and premium materials ensure comfort and style in equal measure.





THE MINDS BEHIND PARKFIVE

A LEGACY OF  
VALUE, A FUTURE  
OF VISION.

DEYYAAR



## 23 YEARS OF SHAPING SKYLINES AND STANDARDS.



DEYAAR is a Dubai-based property developer established in 2002. Since inception, Deyaar has grown to become one of the region's largest developers, delivering landmark commercial towers, residential buildings, and hotels.

Recognized for its iconic developments across Dubai, Deyaar expanded its operations after its 2007 IPO into six business units offering a range of services, including property development, property management, and hospitality. With a strong land bank, a robust project portfolio, and a forward-looking vision, Deyaar is committed to shaping Dubai's urban landscape and delivering value to investors and customers alike.

800 DEYAAR



DEYAAR.AE





# PARKFIVE



DISCLAIMER

This brochure has been prepared with all reasonable care and thought, however, Deyaar Development PJSC and its related companies and agents do not warrant the accuracy of any information shown and do not accept liability for any discrepancy in the items shown. Illustrations, images, furnishing and fixtures in this brochure are depictions and impressions for presentation purposes only and are not to be treated as a representation and/ or warranty by the Deyaar Development PJSC and its related companies and agents. Deyaar Development PJSC reserves the rights to change or revise, or make any modifications and additions to the project as a whole or part thereof or any details therein, at their sole discretion, without any prior notice. No Furniture, goods, accessories are included in the sale.