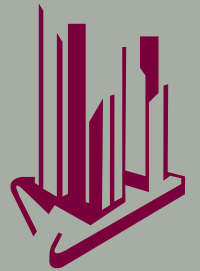
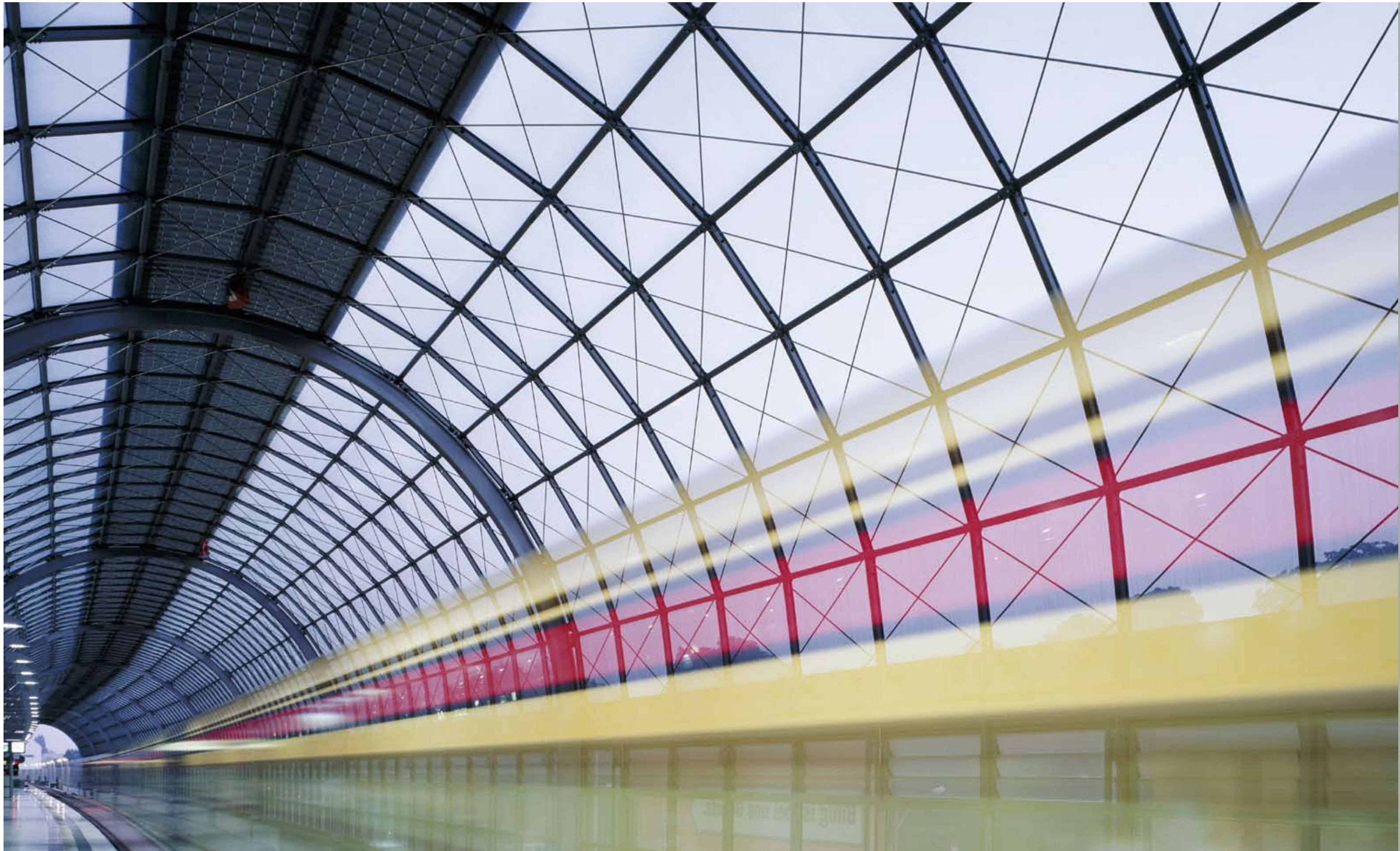


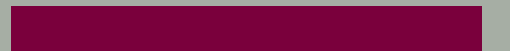


CENTRAL PARK
AT DIFC





CENTRAL PARK
AT DIFC





DUBAI-THE PULSE OF MODERN DAY LIVING

Dubai has grown exponentially in the last three decades and is seen today as the financial, business and tourism capital in the region.

Dubai is home to some of the world's most iconic architectural landmarks – Burj Dubai, the world's tallest tower, Burj Al Arab, the seven star luxury hotel and many other man-made wonders.

Another addition to this ever-growing list of successful ventures is Dubai International Financial Centre (DIFC), the world's fastest growing international financial centre.





LOCATION

Central Park is located minutes away from Sheikh Zayed Road in the heart of DIFC.





CENTRAL PARK AT DIFC

Central Park at DIFC is poised to be the newest addition to the awe-inspiring skyline of Dubai. Located in close proximity to the prestigious Burj Dubai and The Gate, this insightfully conceived development reflects your lifestyle and enterprising spirit.

Central Park is a testament to a brilliant fusion of functionality and art. An intelligent interplay of glass and steel has resulted in dynamic surroundings.

An imposing statement of power, Central Park exudes an air of elegance and sophistication from every nook and corner. An environment highly conducive for setting up a business. Or a home. Or to indulge in premium retail shopping.





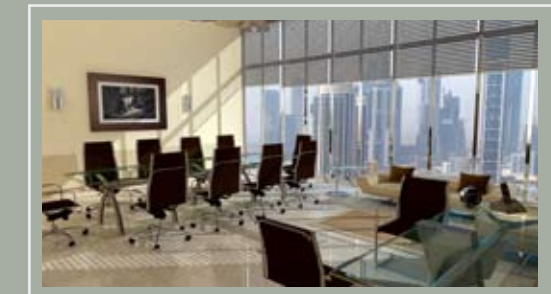
CENTRAL PARK
AT DIFC

OFFICES



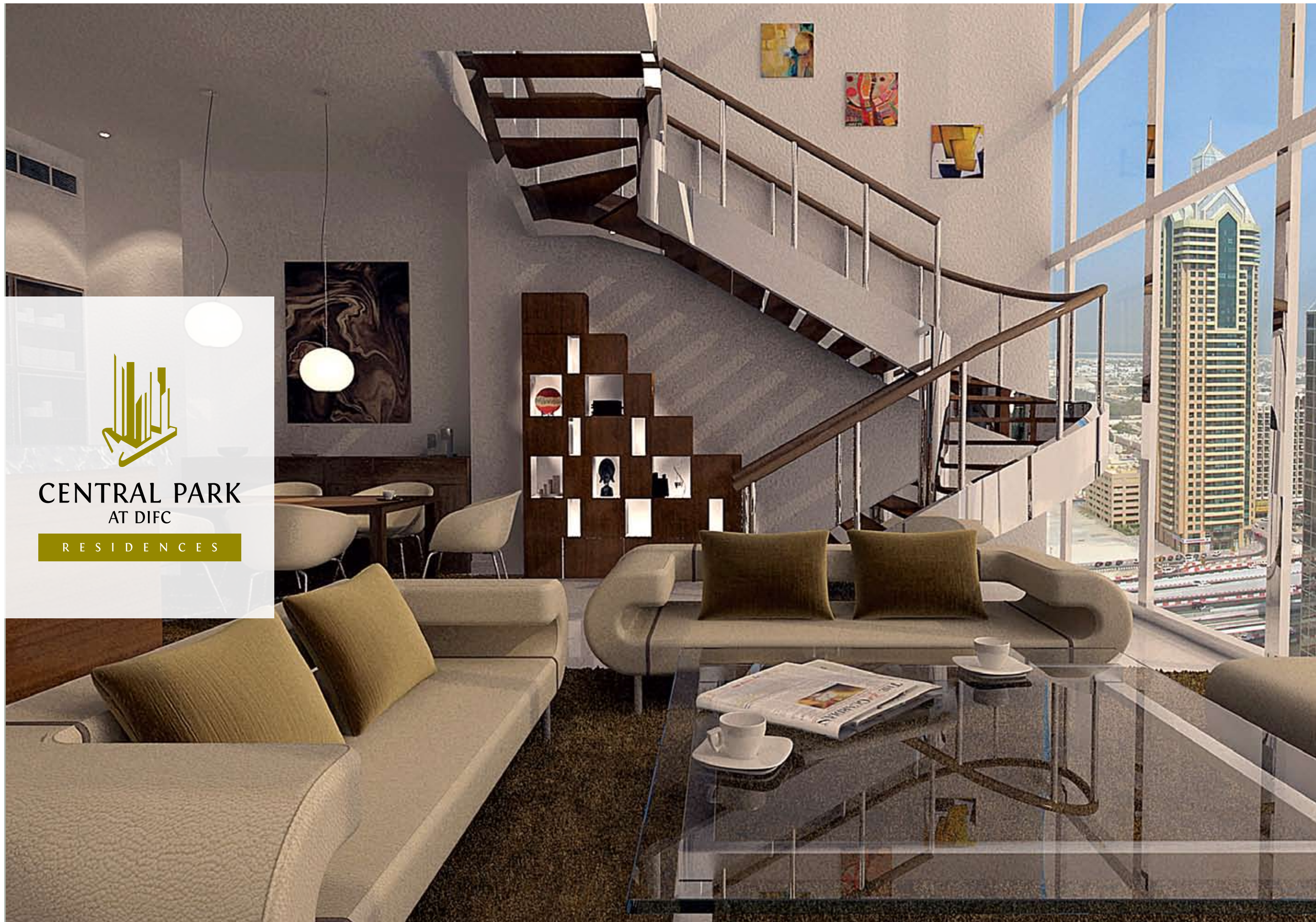
OFFICES AT CENTRAL PARK

Location. Power. Prestige. Offices at Central Park present a rare combination of all three. A premium address in the midst of the financial nerve centre of Dubai, easy access to Sheikh Zayed Road, sophisticated and intelligently designed office spaces are some of the many advantages of setting up office at Central Park. With layouts that help you plan the perfect office and rarefied surroundings that lend themselves to an environment conducive for business, having an office at Central Park translates into a sound investment.



- Spacious and well-designed offices
- State-of-the-art facilities
- Exclusive retail outlets
- Exquisite views of the DIFC District and Burj Dubai
- Conveniently connected by Dubai Metro
- Easy access to arterial roads





CENTRAL PARK AT DIFC

RESIDENCES

RESIDENCES AT CENTRAL PARK

A glorious union of aesthetics and engineering, Residences at Central Park provide an environment that's perfectly suited to the modern, aspirational lifestyle. Situated in Central Park, with panoramic views across DIFC, Burj Dubai and beyond, The Residences will provide a secluded haven in the heart of Dubai.



- Spacious and well-designed apartments
- Choice of studio, 1 & 2 B/R apartments
- Luxurious 2 & 3 B/R duplexes and penthouses
- Podium level landscaped courtyard with swimming pools
- Exclusive retail outlets
- Ultra-modern facilities
- Conveniently connected by Dubai Metro
- Easy access to great shopping at The Dubai Mall, The Boulevard at Emirates Towers and DIFC





SUPERIOR AMENITIES

Life at Central Park isn't about keeping pace with the world. It's about defining your own pace.



- Swimming pools, lap pools, family & children pools and outdoor jacuzzi
- Artistic landscaping at ground floor and podium deck
- Water feature at podium deck
- Retail shops on the ground floor and podium levels
- Multi-purpose hall
- Outdoor jacuzzi for each penthouse
- Restaurant with panoramic views on the highest level of The Offices
- Separate main entrance lobby for The Residences and The Offices on the ground floor
- Covered parking in podium P1 and P2 level





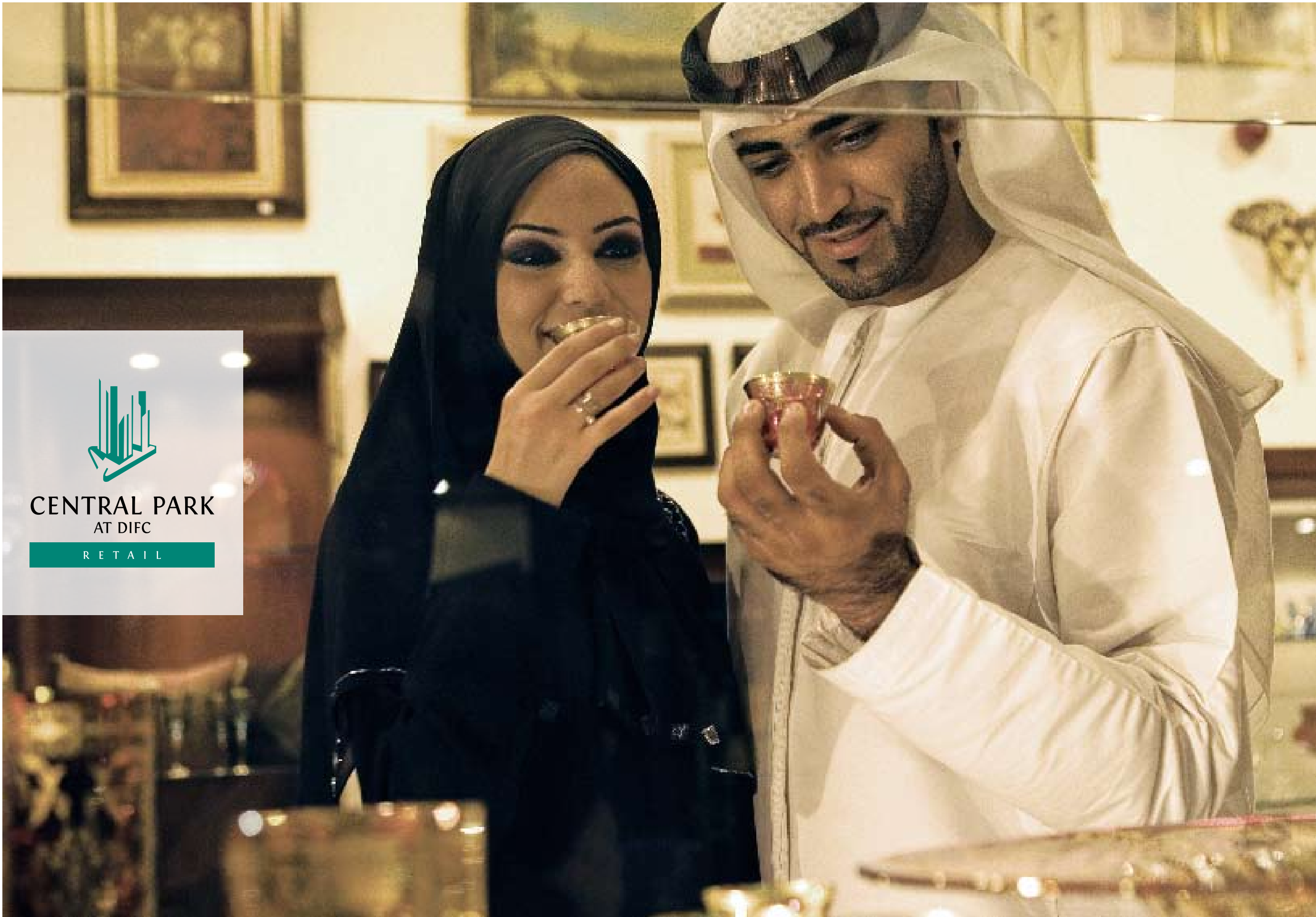
ESSENTIAL FACILITIES

Central Park features facilities that combine the best of technology along with best practices. From security systems to parking bays, all facilities work in perfect accord to give you peace of mind.



- Basement and podium parking
- Communication
- CCTV and advanced security systems
- Passenger and goods lifts
- Loading bays
- Public toilets
- Generators
- Fuel and LPG storage areas
- Storage rooms





CENTRAL PARK
AT DIFC

RETAIL



RETAIL AT CENTRAL PARK

A range of premium outlets featuring luxurious brands and elegant fine dining restaurants will vie for the attention of residents as well as executives. The retail area also features a wide range of entertainment and recreation facilities.



TYPICAL OFFICES KEY PLAN



• Partitions highlighted are for indicative purposes only and can be modified on the basis of space booked • Though units of a specific type will have similar layouts, their unit areas may vary slightly due to minor variances in dimensions

TYPICAL RESIDENTIAL FURNITURE LAYOUT

STUDIO APARTMENT



Unit Area: 882.45 sq. ft.

ONE BEDROOM APARTMENT



Unit Area: 1,275.99 sq. ft.

TWO BEDROOM APARTMENT



Unit Area: 1,413.55 sq. ft.

The design and specifications vary for different units.

TYPICAL RESIDENTIAL FURNITURE LAYOUT

TWO BEDROOM DUPLEX



Unit Area: 1,437.67 sq. ft.
Terrace Area: 308.72 sq. ft.

THREE BEDROOM DUPLEX



Unit Area: 2,379 sq. ft.
Terrace Area: 393.11 sq. ft.

The design and specifications vary for different units.

TYPICAL RESIDENTIAL FURNITURE LAYOUT

PENTHOUSE



Unit Area: 5,392.11 sq. ft.
Terrace Area: 410.22 sq. ft.

The design and specifications vary for different units.





CENTRAL PARK
AT DIFC



For more information, call 800-DEYAAR.